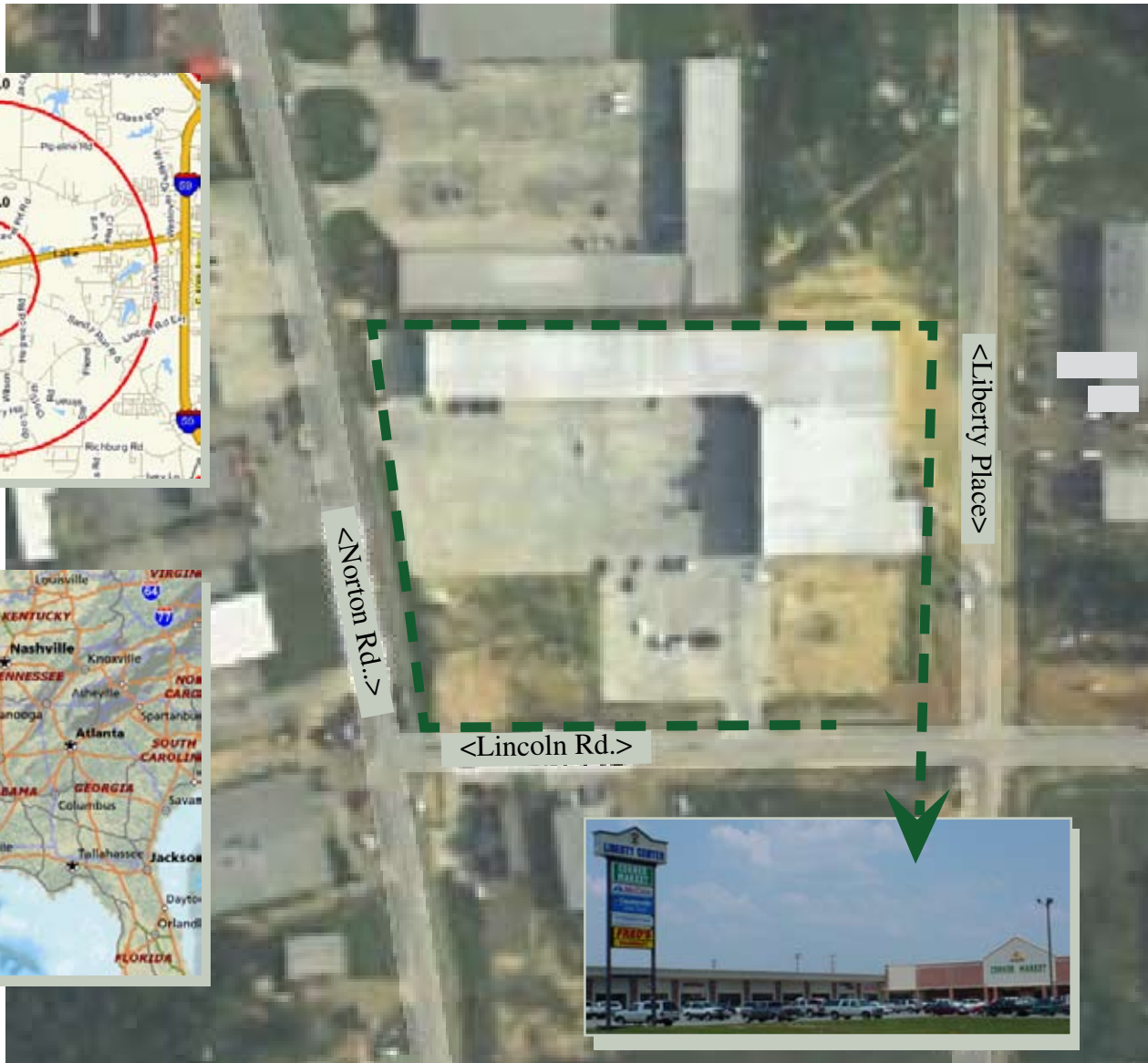


# Hattiesburg Quick Facts:

Hattiesburg MSA Population: **132,235**  
 Growth Rate MSA Ranking 05-06: **43 of 360** (Top 12 Percent)  
 Trade Area Population: **295,198**      Visitor Regional Spending: **\$211 Million**  
 Gross Metro Product: **\$3.7 Billion** (6.8 % Increase)  
 Subdivisions Under Development in Counties: **53 totaling 3,696 Lots**  
 Trade Area Size: **5,086** Square Miles      Mall Sales for 2006: **\$422** per Sq. Ft.  
 Largest Industries: Education and Healthcare

*Source: 2007 Area Development Partnership*



## PROPERTY STATS

1-MI.    3-MI.    5-MI.

## POPULATION

668    12,298    43,616

## AVERAGE FAMILY HH INCOME

96,551    89,099    79,793

## TRAFFIC COUNT: N/A

# LIBERTY CENTER

5266 Old Hwy. 11 • Hattiesburg, MS  
**Total: 69,000 Sq. Ft. Available: 6,000 Sq. Ft.**

Successful developments merged with positive community involvement are what elevates PIERCE REALTY, INC. in the commercial real estate arena.



**PIERCE REALTY, INC.**  
*Commercial Real Estate Development*

601.264.6560 or visit [www.PierceRealtyInc.com](http://www.PierceRealtyInc.com)