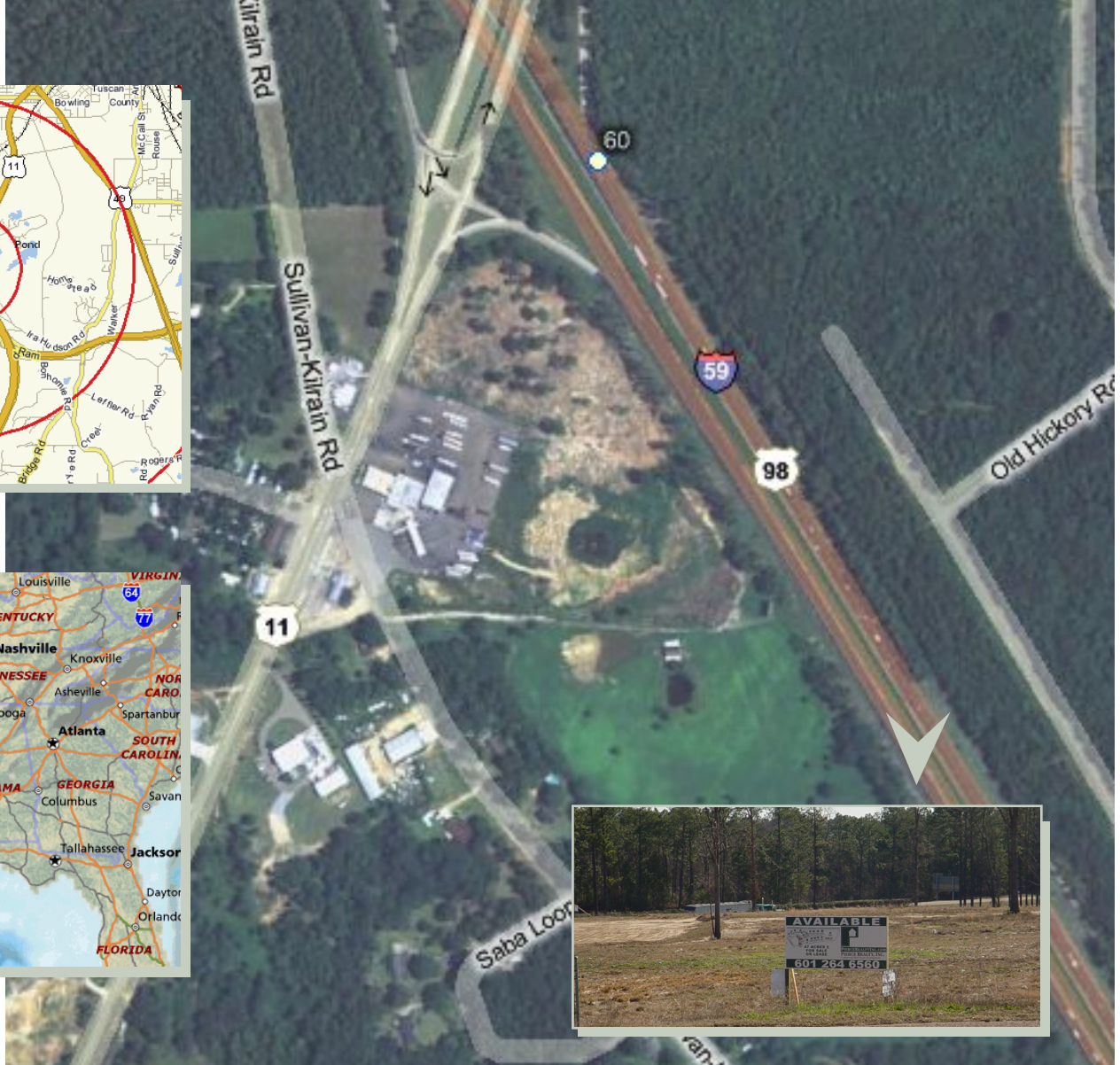
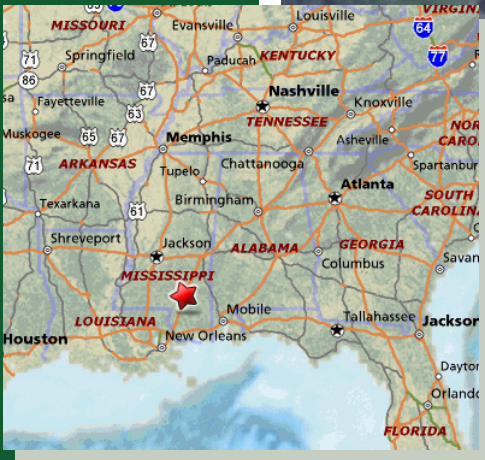
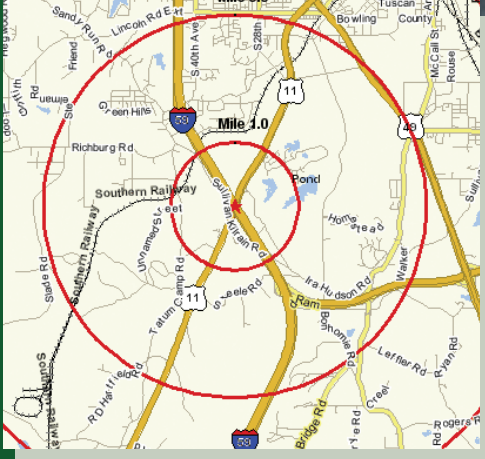


Hattiesburg Quick Facts:

Hattiesburg MSA Population: **132,235**
 Growth Rate MSA Ranking 05-06: **43 of 360** (Top 12 Percent)
 Trade Area Population: **295,198** Visitor Regional Spending: **\$211 Million**
 Gross Metro Product: **\$3.7 Billion** (6.8 % Increase)
 Subdivisions Under Development in Counties: **53 totaling 3,696 Lots**
 Trade Area Size: **5,086** Square Miles Mall Sales for 2006: **\$422** per Sq. Ft.
 Largest Industries: Education and Healthcare

Source: 2007 Area Development Partnership



PROPERTY STATS

1-MI. 3-MI. 5-MI.

POPULATION

588 5,906 45,693

AVERAGE FAMILY HH INCOME

67,757. 75,713. 50,200

TRAFFIC COUNT: 34,000

I59 AT US HWY 11.

I-59 at U.S. HWY. 11 • Hattiesburg, MS
Total: 47 Acres +/- Available: 27.73 Acres +/-.

Successful developments merged with positive community involvement are what elevates PIERCE REALTY, INC. in the commercial real estate arena.



PIERCE REALTY, INC.
Commercial Real Estate Development

601.264.6560 or visit www.PierceRealtyInc.com